



LES ORCHIDAES SEPTEMBER 2023 PRESIDENT

George
0468 316 348
cospresident@outlook.com

Patron
Greg Chippendale

THANKS TO THE OFFICE OF M.P. TERRY YOUNG CABOOLTURE WHO PRINT OUR NEWSLETTER.

SECRETARY:

Robyn
Ph: 0429 031 008

Correspondence:
P.O.Box 549 Caboolture
Qld 4510.

Email:
cosinc@outlook.com.au

TREASURER:

Garry
Ph: 0429 854 404
Email:
cosfigures@gmail.com

BULLETIN

Articles/information

EDITOR:

Linda
Email:
cos-news@outlook.com



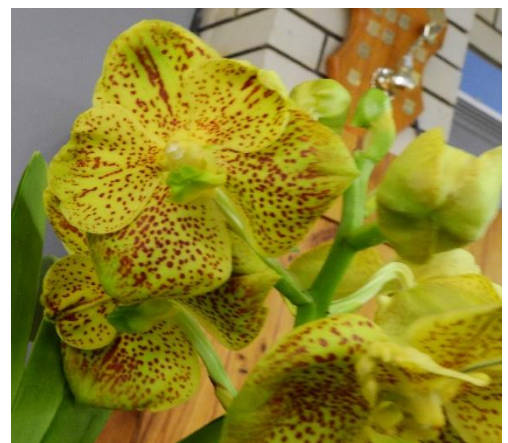
Den. gracillimum



Rth. Shion Free



Phal. Sunset Love



V. Prapathom Gold



Rlc. Chincogan Summit



Bif. harrisoniae



Onc. Speckled Spire



Den. aphyllum



C. Elusive Heartbeat 'Redlip'



Rlc. Temple Song



Den. Merimbula



Phal. Snow Beauty



V. Precious



Cym. Mary Green



Aru. Sea Snake



Den. Our Native



Ludisia discolor 'Spiderman'



Chsch. parishii 'Pink'



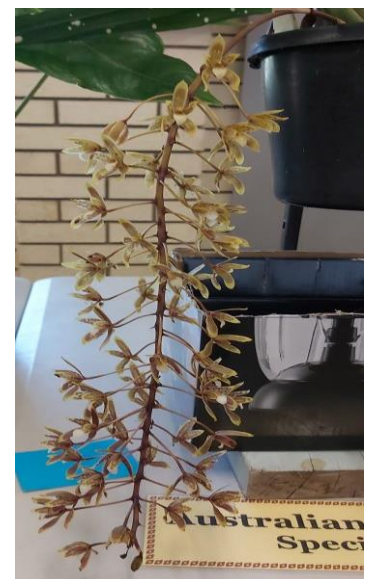
Epi. ibaguense



Bcd. Gilded Tower



Anthurium Prince of Orange



Cym. canaliculatum

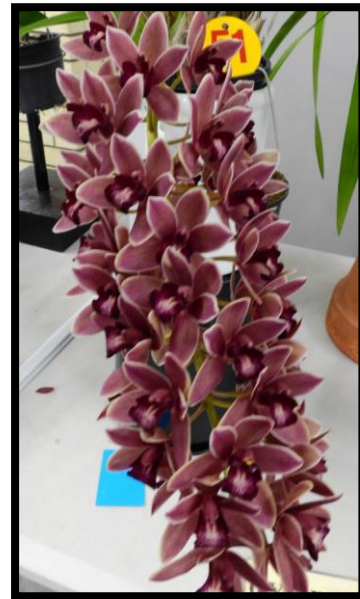
SEPTEMBER CULTURAL DAY MEETING BENCHING RESULTS

Cattleya Exhibition	Rlc. Chincogan Summit	Rob & Betty	Aust. Native Species	Cym. canaliculatum	Graham
	Rlc. Chincogan Summit	Rob & Betty			
	Rlc. Chief Mount 'Orchis'	Andrew			
Cattleya Cluster & Novelty	Rlc. Tsutsung Beauty x C. purpurata	Rob & Betty	Cymbidium	Cym. Spark Sprite	Trevor
	Rlc. Temple Song	Bob & Fran		Cym. Mary Green	Ian
	Rlc. Momilani x Rth. Lady Wilme	Robyn		Cym. Pacific	Ian
Cattleya Mini & Compact	Rth. Shion Free	Trevor	Australian Native Hybrids	Den. Our Native	Trevor
	C. Elusive Heartbeat 'Red Lip'	Trevor		Den. Gracillimum	Trevor
	Rth. Shion Free	Trevor		Den. kingianum	Michelle
Vanda	V. Precious	Ross & Pam	Species Under 25mm	Ludisia Discolor 'Spiderman'	Rob & Betty
	V. Prapathom Gold	Rob & Betty		Epi. Ibaguense	Michelle
				Chilo. parishii	Janet
Phalaenopsis	Phal. Sunset Love	Michelle	Species Over 25mm	Den. lindleyii	Rob & Betty
	Phal. Snow Beauty	Grace		Bif. harrisoniae	Janet
	Phal. Golden Apollon	Michelle		Den. aphyllum	Jim
Oncidium	Tolu. Golden Sunset Brownie	Rob & Betty		Den. nobile var. 'alba'	Andrew
Intergeneric	Aru. Sea Snake	Rob & Betty	Novice Any Other	Onc. Speckled Spire	Joan
	Bcd. Gilded Tower	Grace		Den. Bohemian Rhapsody	Leigh
	Bcd. Gilded Tower	Robyn		Onc. Unknown	Esme
Dendrobium Hybrids	Den. Merimbula	Andrew	Foliage	Anthurium Prince of Orange	Michelle
	Den. Hamana Lake	Lynn		Anthurium andraeanum	Rob & Betty
	Den. Nobile	Robyn Denkel		Orth. Warana	Janet

JUDGES CHOICE & POPULAR VOTE

Cym. Spark Sprite

Trevor



Just a reminder to all members who bench plants at the monthly meetings or shows.
You must have owned your plant/s for a minimum of 6 months before they are eligible to be judged.
If you still wish to display your plants for show, and they don't meet this criteria, sign them, '**Not for judging**'

FOR YOUR INFORMATION

A new procedure for benching orchids at our cultural meetings will be in place from the October meeting.

Benching will be between 12.45 – 1.15 ONLY followed by popular vote from 1.15-1.30.

Meeting starts at 1.30pm.

When you arrive, a steward will be at the door to direct you to several tables at the back of the hall to place your orchids on until the benching tables are ready with dividers and class cards in place. Graham and Mark need time to organize these tables.

Your orchids will need to have numbered discs displayed before they go onto the benching tables and a list of your orchids with genera included ready to be given to Graham.

PRESIDENT'S REPORT

Hi Everybody

Well, another month has passed since my last report.

On the sick list we have Kay who we hope is on the mend, and we will see her at our day meeting again soon, you have been missed by all our members.

Robyn (our secretary) has had a knee replacement and is on the mend at home, thanks to nurse Garry.

Another member having a knee replacement is our editor Linda, we hope all goes well for you.

We had our new growers meet at Jim & Sharon's place, there were 26 members & 2 visitors who joined our Society that day, I think we all learnt a lot.

Please support Our BBQ at Bunnings on 28 October if you can.

Regards

George

FOR YOUR INFORMATION

CHRISTMAS PARTY.

25th November at Morayfield Community Hall. The cost has now been set at \$15 per head. The meal cost is \$33.90 which includes nibbles at 11.30am Main meal at 12pm and dessert.

We need to wash up ourselves to save money. There will be a tea and coffee station in the supper room along with a self-serve system for your meal and dessert.

Soft drinks and alcohol will be at a self-serve station outside the supper room under the verandah.

Hall decorations start at 10am and the table set up will be inside the main hall. Pack up there will be 2pm. The kitchen and supper room need to be vacated by 3pm.

Many hands make light work so please lend a hand.

PAYMENT FOR THE CHRISTMAS PARTY MUST BE PAID BY 20th OCTOBER AS FINAL NUMBERS ARE NEEDED FOR THE CATERERS!

NEXT GROWERS' DAY will be at Robert. Sunday 29th October 10 am start.

Carpool from Ian's property by 9.30am depart time.

Meeting time at Robert's property is 10am. Bring a chair, hat and plate of food to share.

This is a social event with the possibility to purchase some select sale plants. Robert will be talking on Vandaceous orchids. We will have the opportunity to look through his operation. He is still in the process of moving in. Please do not move plants around as a matter of courtesy.

BBQ we have a bunnings BBQ on the 28th October. We still need staffing for that SO please put your name down if available. Call Robyn on if you can help.



CHILDREN'S BRAIN CANCER DONATION PRESENTATION.

A visit was arranged for Becky from The Childrens Brain Cancer Research Centre & her offsider Max who has been in & out of hospital with brain cancer since he was 11 years old, to come to Vic & Linda's home so we could present them with a certificate with the amount of \$3350 that our Society raised for this worthy cause.

The money was raised from generous donations from our members and our orchid meetings and shows and from the orchid society and the proceeds of one of our Bunnings sausage sizzles.

Becky & Max were thrilled and very thankful when they seen the amount that our Society had raised.

The management team has decided to keep The Children's Brain Cancer Research Centre as our preferred choice for continuing donations.

A afternoon tea followed which they were very happy about.

POTS FOR SALE

A selection of black plastic pots are for sale at each cultural meeting. Various sizes are available. A range of other accessories are also available for sale.

We now have a sterilising solution available for sale – Trisodium Phosphate.

BARK is several sizes available and can be purchased for \$35 a 35lt bag.

If any member wishes to purchase bark, [contact Ian](#) to arrange a time to pick up from his home.

Payment of bark to be made on pick up.



HANS ELECTRICAL


Award-Winning Customer Service Lic 77649

~ Licensed Security Equipment Installer ~
~ Beacon Lighting preferred Electrician ~
~ Free detailed Quotes ~

Call Hans on 0458 912 121

- ✓ New Installations, Renovations, Shed Wiring,
- ✓ SWANN Security Systems, Security Lighting,
- ✓ Smoke Alarm upgrade - upcoming Legislation,
- ✓ Power Points, TV-Points, Safety Switches,
- ✓ Ceiling Fans, Down Lights, LED-Lighting,
- ✓ Bathroom Lighting, Heaters, Exhaust Fans,
- ✓ Metering, Surge Protection, Garden Lighting...

www.hanselectrical.com.au



SUPPLIERS OF CAR, 4WD, TRUCK
TYRES, ALLOY WHEELS, WHEEL
ALIGNMENTS & LIGHT MECHANICAL

BIGTYRE GROUP 3889 6768

MAXXIS MICHELIN

UNIT 5/20 PAISLEY DRIVE, LAWNTON 4501 - MIKE: 0413 063 515



Garden Gems
NURSERY

Kathy Richards

m 0400 191 036
t 07 5498 5153
f 07 5497 8625
e kathy@gardengems.com.au
w www.gardengems.com.au

570 Morayfield Road, Burpengary QLD 4505

和 賀 石 酒 樓

RUBY SUN

CHINESE TAKE AWAY & RESTAURANT

LOT 26 LEDA BOULEVARD
MORAYFIELD SHOPPING CENTRE

PHONE: 5459 3955

OPEN SEVEN DAYS A WEEK



CALENDAR OF EVENTS

SEPTEMBER

23 rd 24 th	PINE RIVERS OS SHOW – Kallangur State School Hall	8.30-3.00 8.30-1.00
22 nd - 24 th	HERVEY BAY ORCHIDFEST	8.30
30 th 1 st	ROCKHAMPTON OS SHOW	

OCTOBER

5 th 6 th	SUNSHINE COAST OS SHOW – Pelican Waters Shopping Centre. (Closed Show)	
14 th 15 th	QOS SPRING SHOW – Belmont Shooting Complex	8.30-3.30 8.30-2.00
20 th	COS CULTURAL DAY MEETING – Combined Services Hall – Hayes St Caboolture. Please bring a small plate of food to share.	12.30
20 th 21 st	BRIBIE ISLAND OS SPRING ORCHID & FOLIAGE SHOW – The Orchid House – 156A First Ave Bongaree. Set up – 19 th	8.30-4.00
24 th	COS COMMITTEE MEETING – Morayfield Community Hall Supper Room.	1.00
28 th	BUNNINGS SAUSAGE SIZZLE – Morayfield Helpers needed.	7.00-3.00
29 th	GROWERS GROUP MEET - Visit to Robert's Rolin Farm Nursery, Wamuran. See info on pg. 6	

NOVEMBER

11 th	NAMBOUR OS SPECIES SHOW – Buderim Hall Set up 10 th	
17 th	COS CULTURAL DAY MEETING – Combined Services Hall – Hayes St Caboolture. Please bring a small plate of food to share.	12.30
20 th	COS COMMITTEE MEETING – Morayfield Community Hall Supper Room	1.00
25 th	COS XMAS PARTY – Morayfield Community Hall. More info on pg. 6 and attached Invitation	11.30



To any members who have celebrated a Birthday in September.

Tj BOW ELECTRICAL

For all your electrical & air conditioning needs!

0418 805 478

tjbow@live.com.au
www.tjbowelectrical.com.au

f



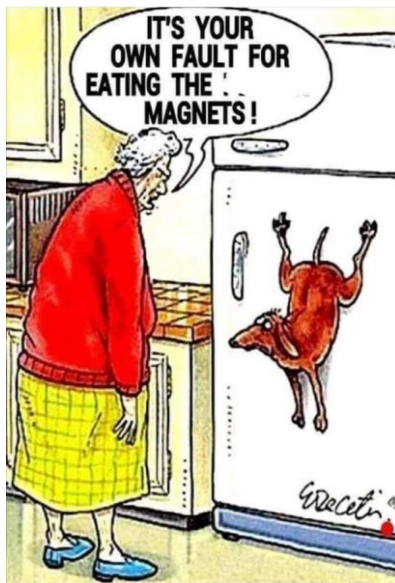
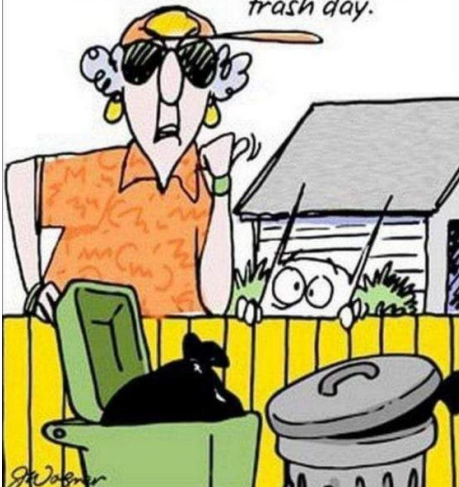
to new members Heather, Shelley, Joan & Gloria. Hope you enjoy being part of Caboolture Orchid Society.



GET WELL WISHES to any members who have been unwell or had a hospital stay lately!

TIME FOR A LAUGH,

I don't want to say I'm old and worn out, but I make sure I'm nowhere near the curb on trash day.



Catasetinae Culture by Geoff

Catasetinae Group of orchids is an easy plant to culture if you follow a few simple but important rules.

There are four species in the Catasetinae group which are:

Catasetum – Cycnoches – Clowsea and Mormodes.

All the above plants have a distinctive growth and rest period.

At the moment, they are coming out of their dormancy period and will now take on a rapid growth period, where water and fertilizer is essential to get the new growth up to the flowering size. It is the new growth that will flower.

Plants begin their new growth in early spring and at this time do not water the plants until the roots have reached 70mm in length. It is a hard thing to do when you see new roots starting and not water the plant.

Once the new roots are well developed, this is when the plant is rapidly developing their new bulbs.

You will see an amazing amount of growth over the next 3-4 months, and this is when the plant requires constant moisture 2 to 3 times a week, and a balanced fertilizer at full strength weekly. Remember it is this new bulb that will flower this year.

Late in the season after flowering in late autumn the plant will enter their dormancy period. The first signs are yellowing and browning of the leaves. It is now time to stop fertilizing and reduce watering by half.

When most of the leaves have dropped it is time to stop watering altogether.

Light levels are the same as for Cattleyas.

POTTING MIX: I use 3 parts fine bark and 1 part perlite. They will also grow well in sphagnum moss.

This bulletin is intended to provide general information and cultural notes only. Caboolture Orchid Society Inc. members of the society or the Editor will not be responsible for any loss of property or injury to any person acting on the information contained in this Bulletin. Cultural advice provided is a guide only and may not suit individual growers. It is the responsibility of the individual to validate such advice before applying.

Articles appearing in this Bulletin may be reproduced but please acknowledge the Author and Publication.