



LES ORCHIDAES

JUNE 2025

PRESIDENT

Graham Williams

0428 623 679

cospresident@outlook.com

Patron

Greg Chippendal

This Newsletter is printed by the office of Terry Young, M.P. for Longman.

SECRETARY:

Lynette Morrison

Ph: 0459 591 034

Correspondence: P.O.Box
549 Caboolture Qld 4510.

Email:

cosinc@outlook.com.au

TREASURER:

George Smith

Ph: 0468 316 348

Email:

cosfigures@gmail.com

BULLETIN

Articles/information

EDITOR:

Linda Wilson

Email:

cos-news@outlook.com

WEBSITE:

cabooltureorchidsociety.org



Sgr. Yokosuka Story



Paph. spicerianum



**Rth. Southern Aurora
'Janice Maree'**



Ddc. convallariiforme



**Rlc. Diamondfield First x
Rlc. Memoria Gordon Vallance**



V. SM. Delight



Phal. Unknown



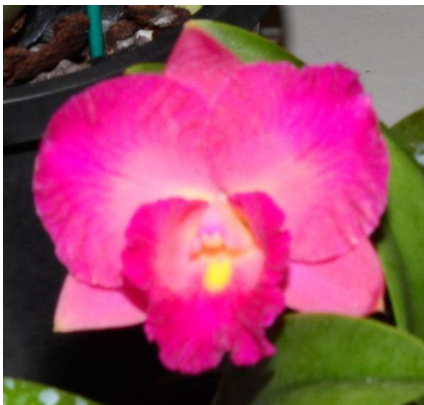
Coel. tommyi



Paph. Unknown



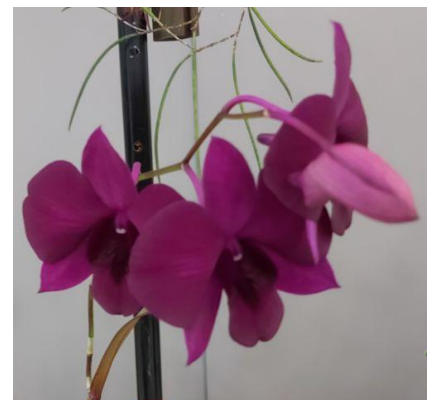
Coel. quadratiloba



C. Dianne Diehm 'Dendi'



Phal. Miki Rose Vincent



**Den. Sakada Red x
Den. Alstonville Inferno**

JUNE CULTURAL DAY MEETING BENCHING RESULTS

Cattleya Exhibition	Rlc. Diamondfield First x Rlc. Memoria Gordon Vallance	Trevor	Any Other Hybrid	Psh. fragrans (4N) x B. subulifolia (4N)	Andrew
	Rlc. Robert Scalia 'Burdekin Ruby'	Trevor		Epi. Unknown	Janet B.
	Rlc. Deception 'Topaz Brilliant'	Bob & Fran			
Cattleya Cluster & Novelty	Sgr. Yokosuka Story	Russ & Jan	Australian Native Hybrids		
	Ett. Hsiang Yu Gold Coast	Trevor			
	Pcv. Golden Peacock	Russ & Jan			
Cattleya Mini & Compact	Rth. Southern Aurora 'Janice Maree'	Vic & Linda	Species Over 25mm	Coel. quadratiloba	Nev
	C. Dianne Diehm 'Dendi'	Trevor		Coel. tommyi	Nev
	Rth. Warren's Jewel 'Red Delight'	Trevor		Coel. barbata	Geoff & Carol
Vanda	V. SM. Delight	Janet B.	Species Under 25mm	Ddc. convallariiforme	Nev
	V. Rothschildiana	Robyn D.		Cal. vestita	Lynn
Phalaenopsis	Phal. Miki Rose Vincent	Vic & Linda	Aust. Native Species	Den. dicuphum	Mark
	Phal. Unknown	Robyn D.		Den. rigidum	Mark
Paphs & Phrag	Paph. spicerianum	Russ & Jan			
	Phrag. longifolium 'Hildos'	Vic & Linda			
Oncidium	Ons. Wildcat	Russ & Jan	Novice Cattleya	C. Boonyarit Diamond	Gail
	Ons. Succubus 'Night Shift'	Andrew			
	Onc. Tsiku Marguerite	Lynn			
Intergenerics	Burr. 'Deuce'	Vic & Linda	Novice Any Other	Phal. Unknown	Gail
				Paph. Unknown	Gail
Dendrobium Hybrids	Den. Sakada Red x Alstonville Inferno	Robyn D.	Foliage	Anthurium	Gail
	Den. Amphion Glowing Embers	Trevor		Maiden Hair Fern	Violet
				Cordyline terminalis	Nev

The highlighted orchids have had a name change. Please adjust your labels.

JUDGES CHOICE: Ons. Wildcat
Jan & Russ



POPULAR VOTE: Rlc. Robert Scalia
'Burdekin Ruby'
Trevor



Den. dicuphum



Burr. 'Deuce'



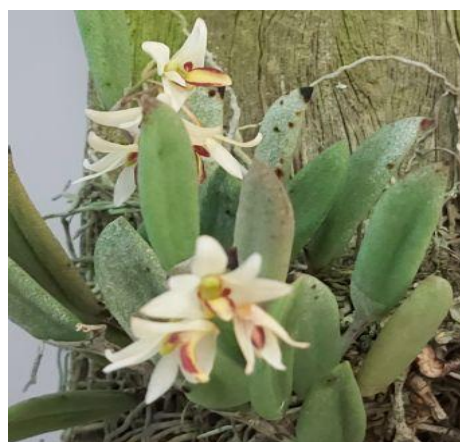
Ett. Hsiang Yu Gold Coast



**Psh. fragrans (4N) x
B. subulifolia (4N)**



Anthurium



Den. rigidum

COS AG SHOW DISPLAY



Some of our willing workers!



Our Treasurer and Michelle were the first to try out Orchid de Café!



The brains behind our display, Michelle, who also has a talent for floral art winning 2nd place in it's class!



I think Ian got a bit carried away watering the plants in the display. I don't think those green balls are going to grow any bigger Ian!

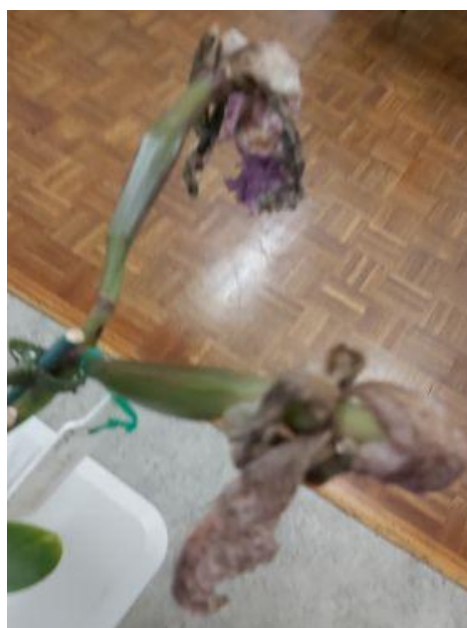




Our member John doing some heavy lifting. He's another talent who made the 3 frames for the backdrops



Michelle & Val demonstrating some tips for the floral art competition at the winter show.



The beginning of the pollination process with 2 seed pods forming after Geoff's demonstration at the last meeting.



Wishing a speedy recovery to any member who hasn't been well lately or is recovering from a hospital stay.



To any members who have celebrated a Birthday in June.

President Report, June 2025

Thanks to Michelle and her set-up team for a stunning display at the Caboolture AP&I show, also those who maned it for the three days and handed out our Winter Show Flyers. Unfortunately, the spectator traffic through the pavilion was a bit disappointing.

We are approaching a busy time over the next couple of months with the Winter Show in July, the AGM in August, a Bunnings BBQ on 30 August, and the Spring Show in September.

Most of you have received my message urging your participation in the winter show. Regarding this and the need to form a new committee at the AGM I have plagiarized the words of the late President John F. Kennedy “***Ask not what your Association can do for you, ask what You can do for your Association***”.

We have been advised that Agnes Waters Orchid Society is being wound up. **With** our AGM approaching we require your nominations for our committee positions now, we don't want to follow Agness Waters out the door.

I have been advised that the following members intend to stand down from their positions:

- Ian – Bark procurement, outdoor signs, soft drinks procurement, etc.
- Linda – Editor Newsletter
- Vic – Purchasing Officer. Procurement and Sales
- George – Treasurer
- Lynette – Secretary
-

Please contact Secretary Lynette for a nomination form or to express your interest in a position. We will also have nomination forms available at the Winter Show Setup.

The committee has approved benching at the AGM this year. Membership will remain at \$20 and is due before the AGM. If possible, pay it into the Association Account with clear notation of **your name and that it is for membership**.

We don't want to be wondering where a \$20 deposit came from.

Finally, it is my pleasure to welcome Colin and Margret Hallard to the association. Their pot NO. is 235.

BARK SUPPLIES

There are several sizes available to purchase in a 35lt bag.

Due to an increase in the price of bark & transport costs, the price for members per bag has increased to \$40.

If any member wishes to purchase bark, contact Ian Blanch on Ph. 0468 347 218 to arrange a time to pick up from his home at 176 Alcock Rd Elimbah.

Payment to be made on pick up.

POTS FOR SALE

A selection of black plastic pots are for sale at each cultural meeting. Various sizes are available. A range of other accessories are also available for sale.

We now have a sterilising solution available for sale – Trisodium Phosphate



HANS ELECTRICAL


Award-Winning Customer Service Lic 77649

~ Licensed Security Equipment Installer ~
~ Beacon Lighting preferred Electrician ~
~ Free detailed Quotes ~

Call Hans on 0458 912 121



- ✓ New Installations, Renovations, Shed Wiring,
- ✓ SWANN Security Systems, Security Lighting,
- ✓ Smoke Alarm upgrade - upcoming Legislation,
- ✓ Power Points, TV-Points, Safety Switches,
- ✓ Ceiling Fans, Down Lights, LED-Lighting,
- ✓ Bathroom Lighting, Heaters, Exhaust Fans,
- ✓ Metering, Surge Protection, Garden Lighting...

www.hanselectrical.com.au



SUPPLIERS OF CAR, 4WD, TRUCK
TYRES, ALLOY WHEELS, WHEEL
ALIGNMENTS & LIGHT MECHANICAL

BIGTYRE GROUP 3889 6768

UNIT 5/20 PAISLEY DRIVE, LAWNTON 4501 - MIKE: 0413 063 515

和 賀 石 酒 樓


RUBY SUN

CHINESE TAKE AWAY & RESTAURANT

LOT 26 LEDA BOULEVARD
MORAYFIELD SHOPPING CENTRE

PHONE: 5459 3955

OPEN SEVEN DAYS A WEEK



CALENDAR OF EVENTS

JUNE

28 th 29 th	NORTH MORETON ORCHID COUNCIL WINTER ORCHID SHOW – Pine Rivers Showground Hall.	8.30-3.00 8.30-2.00
--------------------------------------	--	------------------------

JULY

18 th 19 th	COS WINTER ORCHID SHOW – Morayfield Community Hall Behind Bunning Morayfield. Set up Thursday 17 th SEE PAGES 14,15,16 FOR FURTHER INFO PLEASE NOTE – There will no Cultural Meeting this month	8.30-4.00 8.30-3.00
21 st	COS Committee Meeting – Combined Services Hall Hayes St Caboolture	1.00

AUGUST

2 nd 3 rd	PORT CURTIS OS O & F SHOW - Gladstone	
8 th 9 th	MAROOCHYDORE OS SHOW – Buderim (Open show)	
15 th	COS AGM – Combined Services Hall – Hayes St Caboolture. Bring your orchids along for benching at this meeting. Please bring a small plate of food to share.	1.00
16 th 17 th	ANOS/KABI OS – Pine Rivers Showgrounds	
18 th	COS Committee Meeting – Combined Services Hall Hayes St Caboolture	1.00
23 rd 24 th	QOS SPRING SHOW – Belmont Shooting Complex	8.30-3.00 8.30-2.00
28 th -30 th	CHILDERS & ISIS OS SPRING SHOW –	
30 th	BUNNING SAUSAGE SIZZLE – Morayfield Contact Lynette to offer your help on one of the shifts.	7.00-3.00
30 th 31 st	TOOWOOMBA OS NATIVE SHOW – St Pauls Lutheran Church Hall.	

MORE VOLUNTEERS are needed to help out at the Winter Show.

Contact **Lynette on 0459 591 034 or Fran on 0466 589 599** if you can give some of your time in the area of your choosing to take the burden off the small number of members who always offer to help.

CABOOLTURE ORCHID SOCIETY WINTER SHOW – 18th & 19th JULY 2025.

MORAYFIELD COMMUNITY HALL

298 Morayfield Rd

Morayfield (Behind Bunnings)

IT'S SHOW TIME

Many hands make light work.

PLEASE NOTE: A Novice Section is included in the Winter Show. This will be open to Caboolture Members **ONLY**.

There will be 1 section **ONLY** covering all genera and there will be 1st & 2nd prizes only.

If any novice grower is benching their orchids, please inform Fran that you are a novice grower when your plants are checked in for benching.

This is an estimated timeline for our show:

Set up on Thursday 17th

Hall is opened at 8.00am for Caboolture members to set up the hall.

Tables etc are erected – assistance required

Members sales plants can be brought in from 10.30-12.30pm & benching plants from 12.30 – 2.30pm.

Visitors plants for benching can be brought in from 2.30 – 4.30pm.

Assistance will be provided to place labels on your plants.

Deadline for benched plants to be placed for judging is 4.30pm.

Any member who wishes to sell plants must have a barcode attached to their plants.

PLEASE NOTE: Show Marshalls are the only persons who are permitted to arrange or rearrange plants on the tables.

PLANT SALES: PLEASE NOTE: Sales plants must be WELL ESTABLISHED in the pot, disease and pest & ant free, something that you would buy yourself.

They will be inspected and any plant not passing inspection will not be placed on the sales table.

As we are an orchid society, orchids are the predominate sales plants.

Flowering Anthuriums, Bromeliads, Tillandsias are acceptable, along with Ferns and non-flowering foliage plants.

PLEASE NO water in broms, as this creates a safety issue.

Unacceptable plants will be removed at the discretion of the Sales Organiser.

This is a chance to sell excess orchids, bromeliads & tillandsias & permitted foliage plants.

Flowering orchids are placed on the sales table first as these are what attract the public to our display.

SALES PLANT & FIRE ANT FORM needs to be filled out & given to George prior to the show commencing.

SALES PLANTS will be available to purchase between 3.30pm and 4.30 **ONLY** on Thursday 17th.

 **Judging will commence at 5pm.**

Show opens Friday:

Hall opens to the public at 8.30 am and closes at 4 pm.

Entry to the show is \$5.00 for adults & children under 16 are free.

Throughout the day **the assistance of members is required.**

Saturday 19th July:

Hall opens to the public at 8.30 am and closes at 3pm.

Throughout the day **the assistance of members is required**

Presentation of prizes at approx. 3.00pm

It is "normal" to allow the guest Societies to pack up their plants first.

Assistance required to clear orchids from the tables, pack up tables, chairs and clean the hall.

There are other ways in which you can assist during the show.

Raffle sales, plant sales, general meet & greet duties, security etc.



The Orchid Cafe provides morning/afternoon teas & lunch; it is a very busy little "café". Volunteering for just an hour or two will make a huge difference.

If you can donate cakes, slices, biscuits etc or salad items for sandwiches, this would also be very much appreciated.

CRAFT TABLE AT THE COS SHOW:

COS members are able to table **handmade** craft, jams etc for sale at our show.

A commission is charged (the same as plant sales).

If you table craft work etc your assistance over the weekend you will be required to man the table.



FLORAL ART

Carol Button has kindly offered to be the co-ordinator this year & will lead a team of floral arrangers but may be short-handed, so if you have creative talent or would like to learn please volunteer to assist Carol.

The Floral Art section is once again appealing to members for donations of orchid flowers and foliage to make up the arrangements for sale.

We are looking for a variety of orchid blooms including Crucifix orchids as these add height and colour to the designs. Other types of small flowers such as Lavender, Geraldton Wax, Fairy statice, small chrysanthemums, bromeliad flowers, anything which will last well and compliment the orchids.

If you can help with foliage, such plants as Asparagus retrofractus, Golden cypress, Croton, Raphis palm, Fishtail palm, Leather fern and Nandina & small Heliconia flowers & leaves would be much appreciated.

Please no soft foliage as it does not hold in arrangements.

Thank you for your continued support.

FLORAL ART ENTRIES:

50 Novice - *Black & White*

53 Open - *Reflections*

Just a reminder, that you need to be a financial member to bench your plants and to sell plants at the show.

DONATIONS FOR THE WINTER SHOW CAFE.

It would be very much appreciated if members could continue to support the café (as in previous years) during the winter show with donations of various food items.

Please let **Kay Frankham** know what food you would like to donate.

Email: j.k.frankham@bigpond.com or Ph: 3385 5783 with the item & quantity you wish to donate.

Kay needs more helpers in the kitchen. The kitchen cannot run with 2 or 3 people.

Contact Lynette on 0459 591 034 if you can offer some time to help out.

Caboolture Orchid Society Inc.
Annual Winter Show 2025



Morayfield Community Complex
298 Morayfield Road, (behind Bunnings)

- Wheelchair friendly Venue
- Ample free parking
- Light Refreshments available to purchase

Friday 18th July 8.30am – 4pm	Saturday 19th July 2025 8.30am 3pm
---	--

ADULT ENTRY only \$5 Children under 16 free

Displays of: Orchids, Ferns and foliage and Floral Art from the Caboolture areas, Sunshine Coast and Hinterland

 Potting demonstrations throughout the day

On Sale: Orchids, Tillandsias, Bromeliads, a variety of indoor plants, Floral Art, Arts and Crafts *plus*, Orchid growing accessories

Whatever the occasion, orchids make it special!

Grateful thanks to our major sponsors:



Proudly supported by
CITY OF MORETON BAY



BRISBANE LIONS
FOOTBALL CLUB INC.



BRYAN HILLIERS
DRACAENA FARM NURSERIES
QUALITY PLANT PROMOTIONS



Professionals
Caboolture / Morayfield

12

Nambour Orchid Society

SPRING ORCHID EXPO 2025

6-7 September

Venue 114, 114 Sportsmans Parade,
Bokarina, Sunshine Coast

Entry only \$5 | Eftpos Available

- 15 Orchid Nurseries selling a wide range of orchids and orchid supplies
- Guest speakers
- Arts & Craft Sales
- Refreshments available

For more information please contact
nambourorchids@gmail.com

Queensland Orchid Society Inc.

Spring Show



Featuring Displays of Stunning Orchids

The Belmont Shooting Complex
1485 Old Cleveland Road Belmont
Saturday 23rd August and Sunday 24th August 2025
Sat 8.30 am - 3.00 pm Sunday 8.30 am - 2.00 pm
Contact: qos.secretary@bigpond.com

- Plant Sales
- Refreshments Available
- Wheelchair Friendly
- Raffles

Admission \$4.00
Children Under 14 Free
Bus Trips & Groups Welcome

Pine Rivers Orchid Society Inc

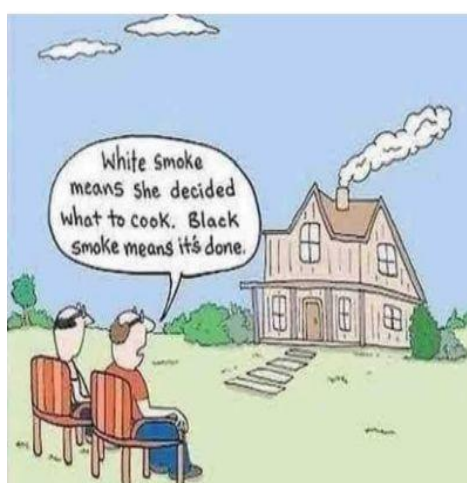
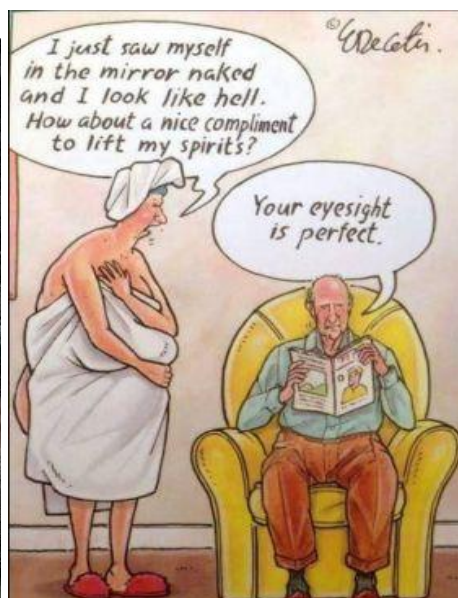
Orchid Show

Sat. 27th and Sunday 28th Sept. 2025
At Kallangur School Hall,
Old Gympie Rd (near Storey Rd)




- Large Spring Orchid display!
- \$4 entry, kids FREE
- Orchids for SALE, including plants from specialist orchid nurseries!
- Tea, coffee, cake for sale
- Open 8.30am to 2pm Saturday 27th
- Open 8.30am to 1pm Sunday 28th
- Wheelchair friendly venue

TIME FOR A LAUGH



This bulletin is intended to provide general information and cultural notes only. Caboolture Orchid Society Inc. members of the society or the Editor will not be responsible for any loss of property or injury to any person acting on the information contained in this Bulletin. Cultural advice provided is a guide only and may not suit individual growers. It is the responsibility of the individual to validate such advice before applying.

Articles appearing in this Bulletin may be reproduced but please acknowledge the Author and Publication.

ORCHID SPECIES CULTURE. by Orchidculture.com

Chysis aurea Lindley

AKA: Plants of the genus *Chysis*, while widespread, are rather uncommon.

There has been and continues to be considerable confusion regarding the status of several species.

Some authorities consider *Chysis aurea* and *Chysis laevis* to be synonymous and have listed these plants as *Chysis aurea* with distribution from Mexico, through Central America, to Venezuela, Colombia and Peru. Most authorities now, however, seem to consider plants from Mexico and northern Central America to be *Chysis laevis*, while plants from South America are considered to be *Chysis aurea*. Although very similar, the flowers of *C. laevis* are reportedly larger, have slight differences in the keels on the lip, and are somewhat differently colored than those of those of *C. aurea*.



ORIGIN/HABITAT: Venezuela, Colombia, and possibly northward into Panama.

Variety *maculata* is reported as far north as Costa Rica. Plants are normally found at lower elevations in dense, moist forests where they grow high up in tall trees, mainly on the trunks or the basal part of large branches. In Venezuela, plants were found near Caracas at about 2500 ft. (760 m) in a damp section of forest near a ravine with running water.

LIGHT: 2500-3500 fc. Light should be somewhat filtered or diffused, and plants should not be exposed to direct midday sun. Strong air movement should be provided at all times.

TEMPERATURES: Summer days average 79-80F (26-27C), and nights average 62-63F (17C), with a diurnal range of 16-18F (9-10C).

HUMIDITY: 75-80% year-round. Conditions may be somewhat more humid in the habitat, however.

WATER: Rainfall is moderate to heavy from late spring into autumn. Amounts then diminish into a 3-4-month winter dry season. Cultivated plants should be watered heavily while actively growing, but the medium must not be allowed to become stale or soggy. Water should be reduced in late autumn after new growths have matured.

FERTILIZER: 1/4-1/2 recommended strength, applied weekly. A high-nitrogen fertilizer is beneficial from spring to midsummer, but a fertilizer high in phosphates should be used in late summer and autumn.

REST PERIOD: Winter days average 76-79F (24-26C), and nights average 57-59F (14-15C), with a diurnal range of 19-21F (11-12C). Rainfall is low in winter, but additional moisture is generally available during nights and early mornings from heavy dew and mist. Water should be reduced for cultivated plants in winter, but they should not be allowed to remain dry for long periods. Fertilizer should be reduced or eliminated until new growth starts and heavier watering is resumed in spring.

GROWING MEDIA: Because of the pendent growth habit, these plants are probably more easily managed if grown mounted on a slab of rough bark or tree-fern fibre. Humidity must be kept high for mounted plants, however, and they must be watered at least once daily in summer. Several waterings a day may be necessary for mounted plants during extremely hot dry weather. Plants also grow well in hanging pots or baskets that allow the growths to hang naturally and are filled with an open, fast draining medium that enables the roots to dry rapidly after watering. For plants in pots or baskets, many growers recommend using a shredded tree-fern fibre as a medium because it breaks down more slowly than bark and, therefore, requires repotting less often. Some growers also recommend adding perlite and large chunks of charcoal to the potting mix. Because these plants do not usually respond well when disturbed, repotting or dividing should be done only when the medium breaks down or the plant has overgrown its container. When repotting or dividing is necessary, however, it should be done only when new root growth is just starting.

This allows the plant to become established in the shortest possible time with the least amount of stress.

Plant and Flower Information:

PLANT SIZE AND TYPE: A relatively large, descending to pendant sympodial epiphyte with growths that may reach 20 in. (50 cm) long.

PSEUDOBULB: 20 in. (50 cm) long. The spindle-shaped pseudobulbous stems are completely enveloped by the sheathing bases of the leaves. These remain around the stems as dry, gray sheaths, even after the leaves have fallen. The pseudobulbs of *C. aurea* are relatively slender when compared with other species in the genus.

LEAVES: To 12 in. (30 cm) long but about 2 in. (5 cm) wide. Several medium to light green leaves are produced along the length of the pseudobulb. They are thin, somewhat wavy, rather soft-textured, strongly ribbed, taper to a sharp point at the tip, and are deciduous at the end of the growing season.

INFLORESCENCE: To about 12 in. (30 cm) long, but usually shorter. The inflorescence is produced from the axils of the new growth before the leaves have developed.

FLOWERS: 6-12 long-stalked, waxy, long-lived, fragrant blossoms are produced on each inflorescence. The flowers are 1.6-3.0 in. (4.0-7.5 cm) across but are usually about 2 in. (5 cm) and are somewhat variable in the size and shape of the floral segments. The fleshy sepals and petals are pale yellow at the base, yellow at the apex, with most of the inner surface flushed with red to orange brown. The fleshy, whitish lip, which is marked with red brown, is about 0.8 in. (2 cm) long and about 0.8 in. (2 cm) wide if the normally upright side lobes are spread. The lip has five parallel keels of equal length extending from the base to the midpoint. The flowers of *C. aurea* variety *maculata* from Panama and Costa Rica are said to be somewhat smaller than those of the type but are more brightly coloured.



Chysis aurea



Chysis bruennowiana



Chysis aurea var limminghei

PLANNED BUS TRIP TO SPRING ORCHID SHOW AT BOKARINA



DATE: Saturday 6th September

1st Pick up: 7.15am sharp. Green Wattle Retirement Village.
Eastern Service Rd, Burpengary East.
This is the middle one of the 3 villages.
Pick up will be on the highway side of the Service Rd at the bus shelter.
Be there 15mins prior to pick up.

2nd Pick up: Approx 7.30am at Caboolture Showgrounds
Gate 2 Beerburrum Rd.
Plenty of parking on the right of the gate.
Be there 15mins prior to pick up.

DEPART The bus will depart the Orchid Show at approx. 11.00am.

LUNCH: Palmwoods Hotel from 11.30 – 1.00-1.30.

AFTERNOON VISIT TO THE BIG PINEAPPLE FOR A DRINK OR AN ICECREAM.

ARRIVE BACK AT THE SHOWGROUNDS AT APPROX 3.30pm for 1st drop off.

PRICE: \$20.00 per member including the \$5.00 entry fee into the show & lunch!
\$25.00 per visitor including the \$5.00 entry fee into the show and lunch!

To book your seat, Contact Robyn on 0429 031 008.

MENU CHOICE WILL BE SENT OUT IN THE NEXT 2 WEEKS.